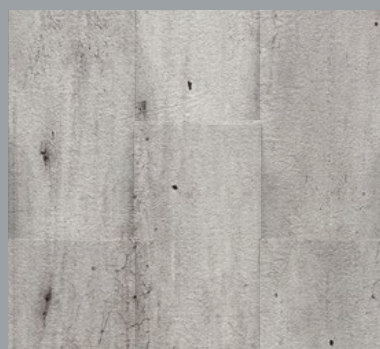
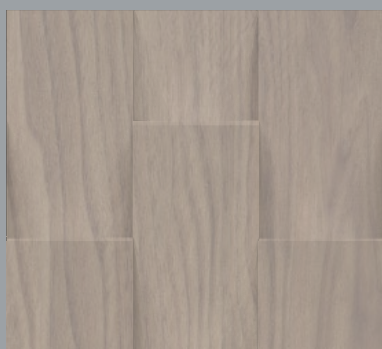
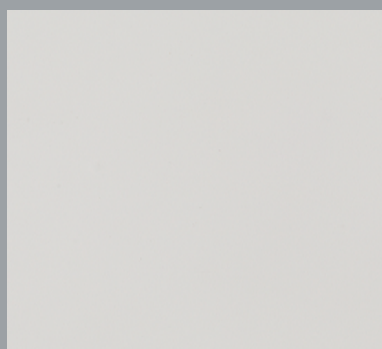


b.plus



super matt
collection
textured collection

scratchproof
and fingerprint-proof
composite panels

breda
TECNOLOGIE



Surfaces that excite

lo.plus Line of composite panels featuring a special scratchproof and fingerprint-proof treatment that provide an original take on the latest design trends. The PVC core is faced with through-coloured thermoplastic laminate, providing excellent workability, especially when it comes to mitre folding and thermoforming. Self-extinguishing and moisture resistant, it features low light reflection and an extreme matt finish that, combined with its soft feel, make this a product whose characteristics are perfect for making components for kitchens, bedrooms and bathrooms, and for use in the indoor furniture industry, including high-moisture areas. If it becomes scratched slightly, it can be repaired with heat (e.g. hot iron). Place a white cotton cloth on the area marred by fine scratches and iron over with a hot iron for no more than 10-15 seconds at 120° (do not use synthetic cloths).

TECHNICAL FEATURES:

- can be worked using everyday woodworking tools
- suitable for screwing into
- excellent for mitre folding
- hygienic
- environmentally compatible (**Breda technology uses only Formaldehyde-Free glues**)
- suitable for contact with food
- water repellent
- features stain-resistant / fingerprint-proof treatment
- scratch resistant
- surface scratches can be repaired with heat
- low light reflection, extremely matt surface
- soft to the touch

DIRECTIONS FOR USE AND CARE:

It is suitable as a material for interior furnishings, lending itself to a whole host of solutions, both vertical and horizontal, from modular kitchens to office furniture, internal doors, wardrobe doors, bathroom countertops and other uses that are compatible with its technical properties. It can even be used in high-moisture areas like bathrooms. It is not recommended for use as a kitchen countertop. For routine cleaning, use lukewarm water or a gentle detergent applied with a damp cloth. Almost any standard household cleaners and disinfectants are tolerated without any problem. Do not treat surfaces with products containing abrasive, acidic or alkaline substances, scrubbing sponges or other unsuitable implements, such as sandpaper or steel wool as they could damage the surface.

B plus is
a Breda Tecnologie product

breda
TECNOLOGIE

super matt collection

textured collection

Property	Test method	Unit	Value	Notes
Thickness	En 438-2-5	mm	from 0.3 to 0.6	
Gloss 60°	ALFA AW A16/10	Gloss	< 5	
Resistance to surface wear	EN 438-2-10	Rating	4 ≥ 350	
Resistance to immersion in boiling water	EN 438-2-12	Rating	> 4	
Resistance to water vapour	EN 438-2-14	Rating	5	
Resistance to dry heat	EN 438-2-16	Rating	3	
Resistance to damp heat	EN 438-2-18	Rating	4	
Resistance to cracking under stress	EN 438-2-23	Rating	5	
Resistance to scratching	UNI EN 15186:2012 method B	Rating	B	1,6 N
Hoffman scratch hardness	HOFFMAN TEST	N	5	
Light fastness	UNI EN 4892-2:2013	Grey scale rating	5	Method B (indoor) except par 5
Surface resistance to cold liquids	UNI EN 12720:2013	Rating	A	UNI CEN/TS 16209:2011
Resistance to impact by small-diameter ball	EN 438-2-20	Rating	>90N	
Reaction to fire	EN 13501-1:2007	Level	B	fire performance
		Level	s2	smoke development
		Level	d0	flaming droplets

PCV CORE TECHNICAL DATA

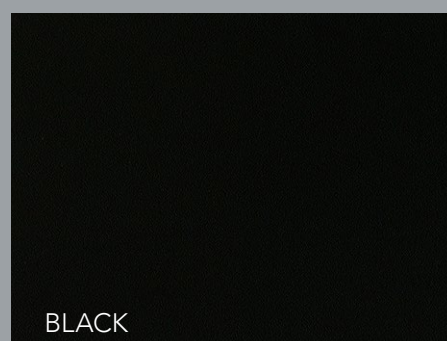
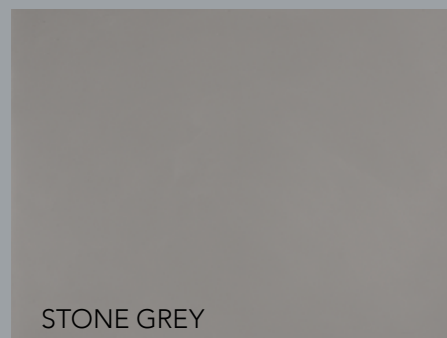
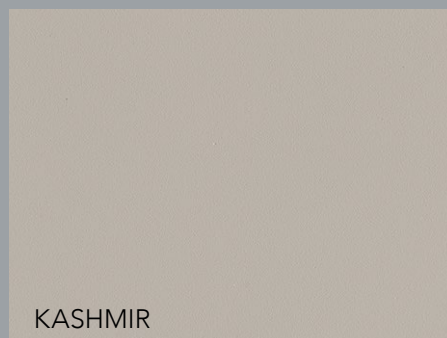
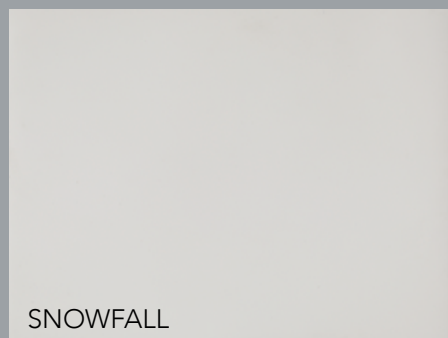
Closed-cell expanded PVC, containing 45-50% recycled material.

Density	550 ±5% Kg/m3		EN 232	
Thickness	5 mm			
Dimensions	1300 x 2100 mm	1300 x 2500 mm	1300 x 3050 mm	
Final panel weight	670 ±5%			
Absorption	DIN 53495	<0.25% of its weight	24 hours at 23°	
Reaction to fire	EN 13501-1:2007	Level	B	fire performance
		Level	s3	smoke development
		Level	d0	flaming droplets

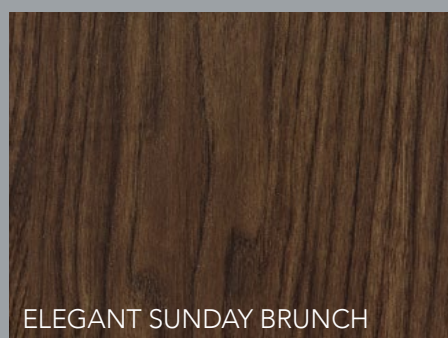
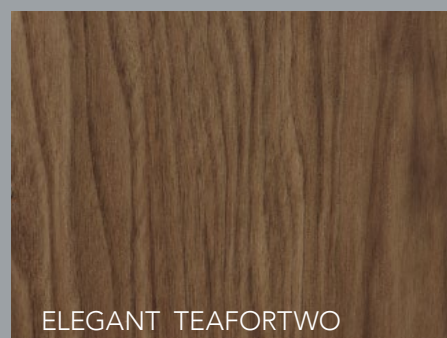
While the information given herein represents the best of our knowledge and expertise, the contents hereof are not legally binding. As the user, it is your responsibility to ensure that the product meets your requirements and complies with all relevant regulations regarding its use.

NOTE: **Breda Tecnologie Commerciali Srl** reserves the right to make changes to the product's composition and manufacturing process, and hence to the product's performance.

SUPER MATT COLLECTION



TEXTURED COLLECTION



TECHNICAL DATA B. PLUS finish:

Core	PVC 5 mm	1300 x 2100/ 2500/3050
------	----------	------------------------