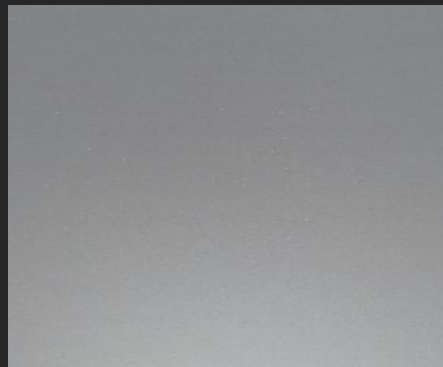




**decorative
panels**

Satin

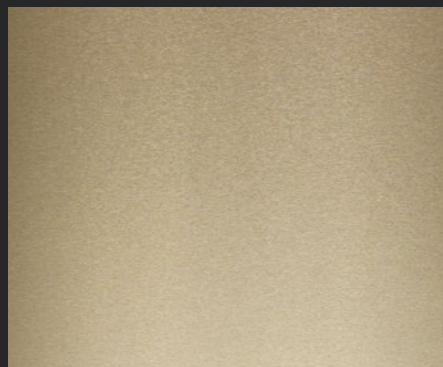
Brushed



ARGENTO



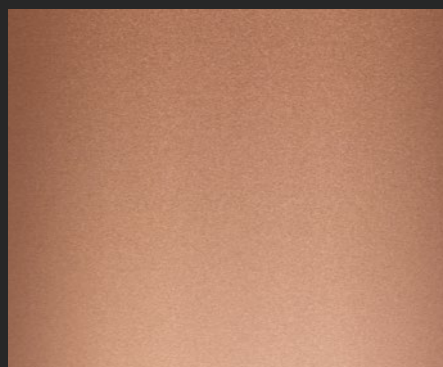
INOX



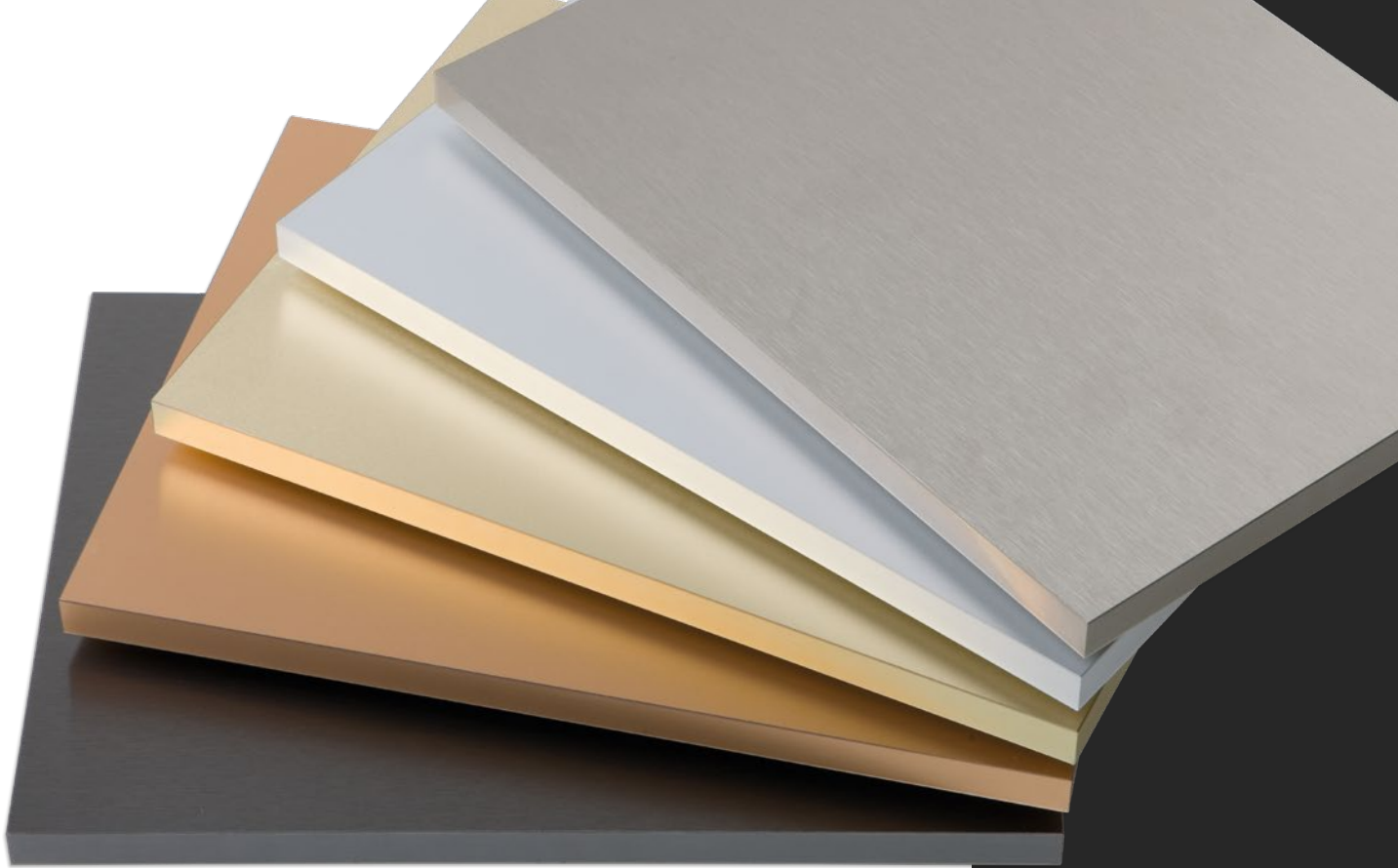
ORO



FERRO



RAME



Surfaces that excite.

Line of composite panels with anodized aluminium facing, particularly suitable for any application where the look of the product is of paramount importance. They are increasingly widely used to create interiors that echo current trends in furniture and design. The MDF core is sandwiched between an anodized aluminium foil facing and a backing in prepainted aluminium or the same anodized finish as the top surface. The electrolytic anodizing process transforms the metal surface into an oxide layer that is an integral part of the actual metal. It is not a covering attached to the surface of the metal and hence there is no risk of the bond failing, resulting in peeling, blistering, splitting or chipping that surface coverings like painted coatings are prone to.

Technical features:

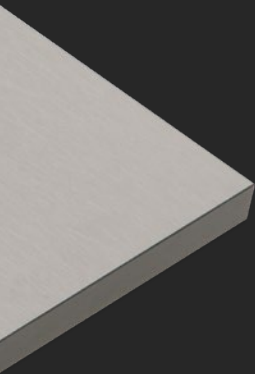
- Can be worked using everyday woodworking tools
- Suitable for screwing into
- Suitable for edging
- Coordinated 1mm acrylic edging available
- Environmentally compatible
(Breda technology uses only Formaldehyde-Free glues)

Directions for use and care:

It lends itself to all manner of interior furnishing solutions, such as wall claddings, semi-finished panels for furniture, doors and other uses that are compatible with its technical properties. Not suitable for worktops. If the edges are protected from moisture ingress, it can even be used in high-moisture areas. For routine cleaning, use water and gentle multi-purpose detergents applied with a soft damp cloth. Do not treat surfaces with abrasive products, steel wool, acetone, trichloroethylene or ammonia. Whatever the case, before using a new product, we recommend testing it on an inconspicuous area.

B.Metal is a
Breda Technologie
product

breda
TECNOLOGIE



Satin



Brushed

While the information given herein represents the best of our knowledge and expertise, the contents hereof are not legally binding.

As the user, it is your responsibility to ensure that the product meets your requirements and complies with all relevant regulations regarding its use.

NOTE: Breda Tecnologie Commerciali Srl reserves the right to make changes to the product's composition and manufacturing process, and hence to the product's performance.

TECHNICAL DATA			
FRONT ANODIZED FACING			
Finish	Satin - brushed		
Treatment	Anodizing		
Front protection	LDPE film		
Alloy	5005 - Al Mg 1	EN 573-3	
Temper	H14	EN 515	
	required	standards	
Minimum tensile strength Rm [MPa]	145	EN 485-2	
Minimum yield strength Rp 0.2 [MPa]	120	EN 485-2	
Minimum elongation A5A10 [%]	2	EN 485-2	
Anodic oxide thickness [μ M]	> 9	ISO 1463	
Sealing quality	< 2	ISO 2143	
Corrosion resistance - 1000 hours	No pitting corrosion	ISO 9227	
Surface hardness	> 7H	ISO 15184	
BACKING			
Finish	RaI 9010 / same as front		
Treatment	Polyester coating		
Rear protection	LDPE film		
Alloy	3105	EN 573-3	
Temper	H44	EN 515	
Core	MDF E1 18 mm	1250 x 3050 mm	
Density	EN 232	Kg/m ³	760 \pm 5%
Final panel weight with core		Kg/m ³	830 \pm 5%



