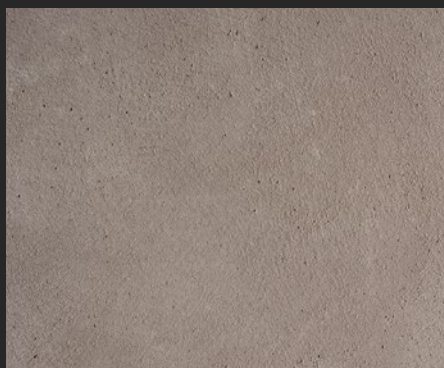


**decorative  
panels**

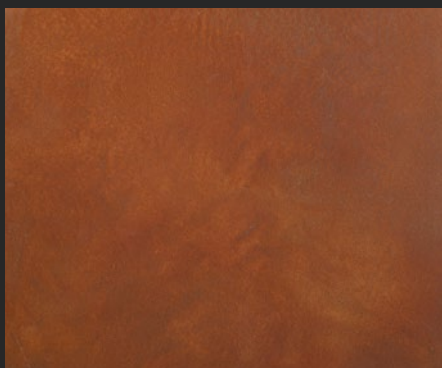
b.stucco

Concrete Finish



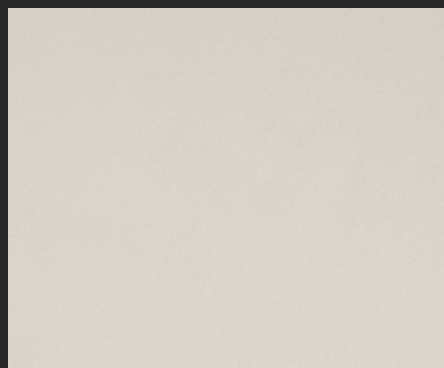
FUMO

Metal Finish



CORTEN

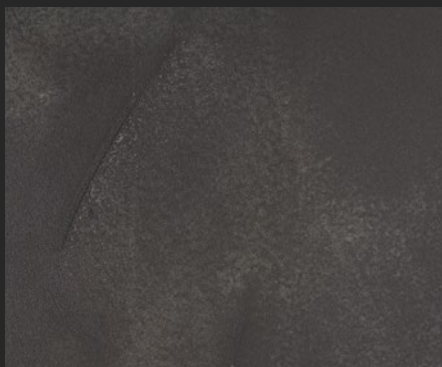
Clay Finish



NEVE



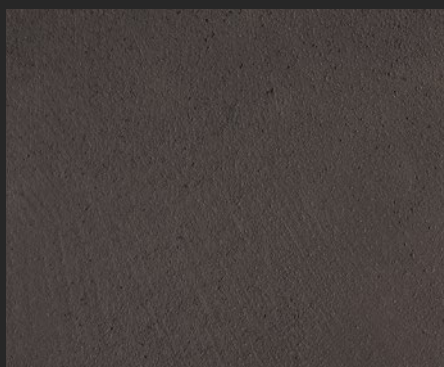
TORTORA



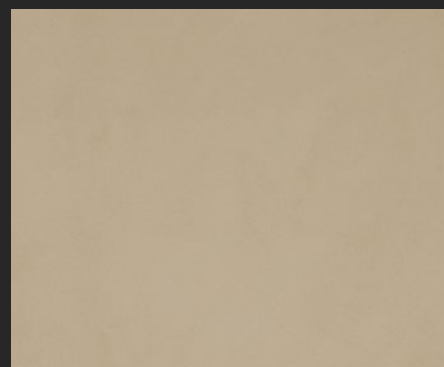
FERRO



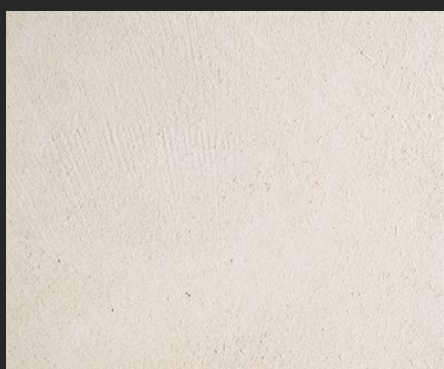
ARDESIA



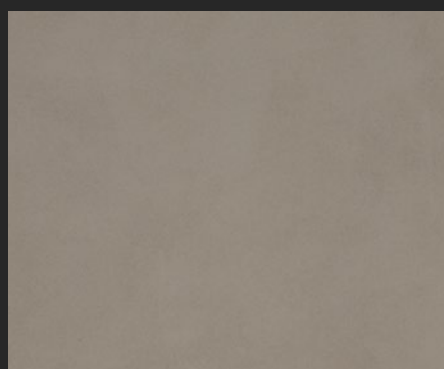
ANTRACITE



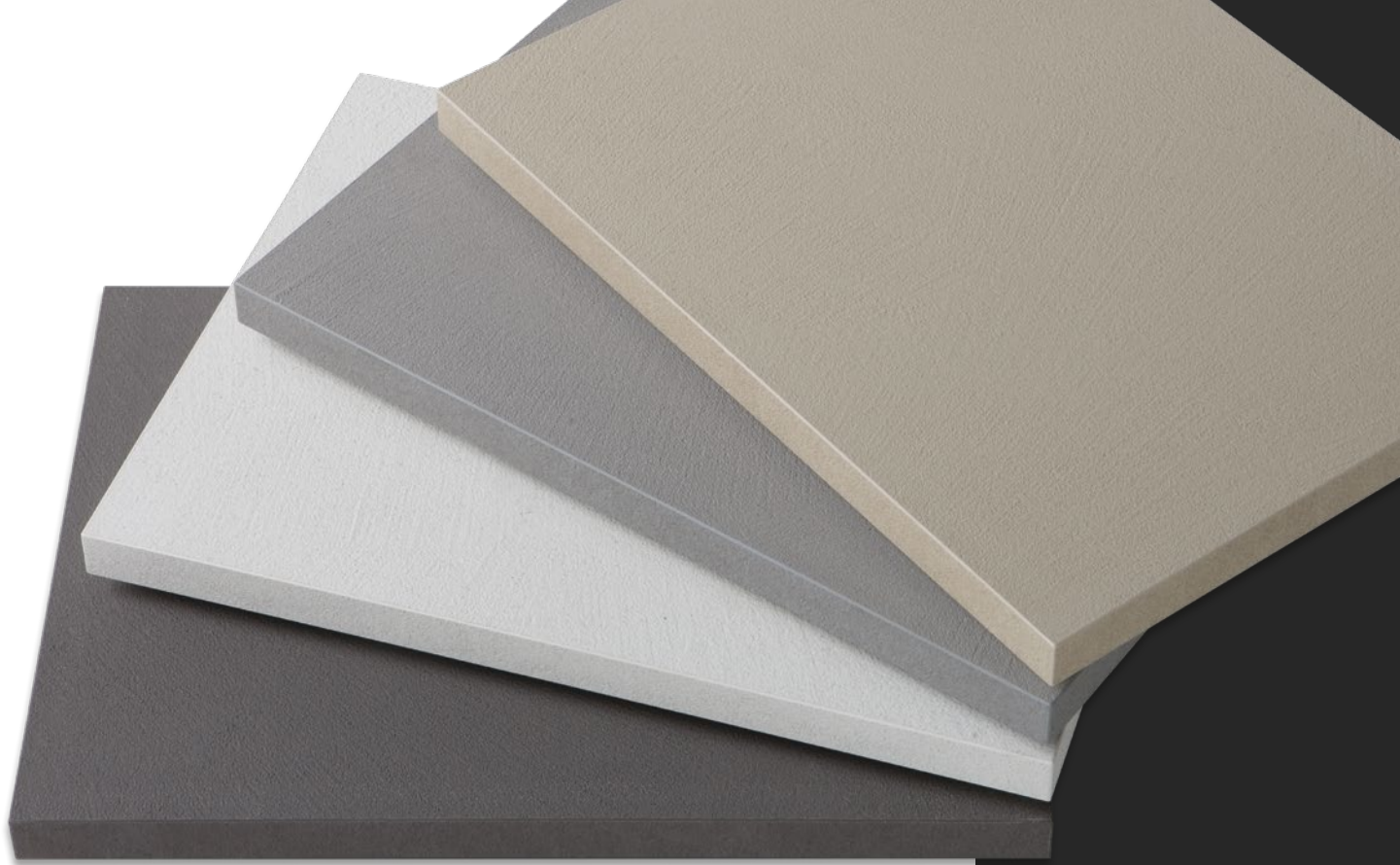
POLVERE



BIANCO



CENERE



## Textured, high-performance beauty.

The distinguishing feature of the environmentally compatible decorative panels in the B.Stucco line is the finish produced using special latest generation resins, additives and quartz aggregate, whose original textured effect comes with the added bonus of perfect adhesion to the MDF, HPL, PVC or chipboard backing. With the finish applied by hand, the surfaces are given an unprecedented appearance, really bringing out the beauty of the natural materials in all their gorgeous nuances. Combining style and performance, the B.Stucco panels are used to produce furniture and decor elements, decorative wall solutions and kitchen worktops. They are certified as scratchproof and stain resistant with an A rating (except the metal finish).

---

### Technical features:

- For optimal panel sizing, we recommend using cutting systems with a diamond blade and keeping the decorative side exposed
- Digitally printed coloured 1mm ABS edging available

---

### Directions for use and care:

B.Stucco decorative panels are made from compounds formulated with latest generation resins, additives and quartz aggregate offering excellent performance in terms of technical properties, lasting looks, hygiene, ease of maintenance and resistance. These are entirely non-porous solid surface materials and are easy to clean with a damp cloth and clean water. Do not use abrasive sponges. Liquids cannot penetrate the surfaces, though you should avoid letting liquids sit on surfaces for any length of time. For routine cleaning, use water and gentle multi-purpose liquid detergents. Do not use denatured alcohol, acetone, bleach or detergents with a highly basic pH. Contact between the decorative surface and the following substances is also to be avoided: trichloroethylene, industrial solvents, hydrofluoric acid, caustic soda, paint solvents, and hair dye. Whatever the case, it is always advisable to test a new product on an inconspicuous area of the decorative surface before using it on the whole panel.

**B.Stucco** is a  
Breda Tecnologie  
product

**breda**  
TECNOLOGIE



While the information given herein represents the best of our knowledge and expertise, the contents hereof are not legally binding.

As the user, it is your responsibility to ensure that the product meets your requirements and complies with all relevant regulations regarding its use.

NOTE: Breda Tecnologie Commerciali Srl reserves the right to make changes to the product's composition and manufacturing process, and hence to the product's performance.

STUCCO FINISH TECHNICAL DATA:	
Consistency	Paste
Specific weight	1.4 Kg/l
Particle size	0,5 mm
Formaldehyde	None
Brookfield viscosity at 20 °C method ASTM D 2198	135.000±20.000 Cps
Surface resistance to abrasion - standard UNI EN 15185:2011	Class A (*)
Surface resistance to scratching - standard UNI EN 15186:2012 method B	Class A (*)
Resistance to sudden changes in temperature - standard UNI 9429:2015 method B	No finding
Lightfastness - standard UNI EN 15187:2007	No finding
Surface resistance to cold liquids - standard UNI EN 12720:2013	Class A (*)
Surface resistance to damp heat - standard UNI EN 12721:2013	Class A (*)
Surface resistance to dry heat - standard UNI EN 12722:2013	Class C
(*) Except metal finish	
MDF TECHNICAL DATA:	
MDF	CARB 2
Density	730 ±5% Kg/m <sup>3</sup>
Thicknesses	18 - 22 mm
Dimensions	2800 x 1220 mm
Backing	Melamine
Rear protection	LDPE film
Final panel weight with 18mm-thick core	770 ±5% Kg/m <sup>3</sup>
Final panel weight with 22mm-thick core	780 ±5% Kg/m <sup>3</sup>
HPL TECHNICAL DATA:	
Density	1400 Kg/m <sup>3</sup>
Thicknesses	2 mm.
Dimensions	3050 x 1250 mm
Final panel weight with core	1300 ±5% Kg/m <sup>3</sup>
WP CHIPBOARD TECHNICAL DATA:	
Density	680 ±5% Kg/m <sup>3</sup>
Thicknesses	38 mm
Dimensions	4200x600/4200x800
Backing	Melamine
Rear protection	LDPE film
Final panel weight with 38mm-thick core	710 ±5% Kg/m <sup>3</sup>
PVC TECHNICAL DATA:	
Closed-cell expanded PVC, containing 45-50% recycled material	
Density	500 ±5% Kg/m <sup>3</sup>
Thicknesses	3 mm
Dimensions	1220 x 3050 mm
Final panel weight with core 780 ±5% kg/m <sup>3</sup>	780 ±5% Kg/m <sup>3</sup>



Regardless of the finish chosen, it is normal to find natural variations in appearance between one decorative panel and the next. However, such differences in appearance are what make it such a unique, quality product. Consequently, minor differences in colour, cracks and holes are not cause for complaint.

